



**RICK SCOTT**  
GOVERNOR

March 23, 2017

Mr. Edward Boling  
Acting Chairman, Council of Environmental Policy  
Executive Office of the President  
722 Jackson Place, NW  
Washington, D.C. 20506

Dear Chairman Boling:

I would like to bring to your attention a long pending road project in Pasco County, Florida. For 19 years, federal permits have delayed Pasco County's work to develop the Ridge Road Extension which will provide critical hurricane and tropical storm evacuation capacity for more than 200,000 residents in the county's coastal areas. I have been assured that Pasco County is prepared to implement the project pending issuance of the federal permit required by the Clean Water Act. As a county road, the state has no permitting or financial responsibility. I write this letter to request your timely review of the Ridge Road Extension project for designation as a "high priority" infrastructure project for expedited environmental review by the U.S. Army Corps of Engineers under Executive Order 13766 signed by President Trump on January 24, 2017.

When I was in business, I often waited a long time for a simple yes or no. Regardless of what the answer is, Pasco County deserves a timely response. I understand that the county has worked diligently with the Army Corps to complete the permit process and I appreciate your attention and quick action on this matter so the county may plan accordingly and avoid unnecessary waste in this drawn-out procedure.

I have enclosed background information regarding the county's efforts to obtain the required permit and implement the project. Please let me know if my office can provide additional information that would assist in your review. Thank you in advance for your consideration of this request.

Sincerely,

A handwritten signature in blue ink, appearing to read "Rick Scott".

Rick Scott  
Governor

cc: Congressman Gus Bilirakis



## THE FLORIDA SENATE

Tallahassee, Florida 32399-1100

**COMMITTEES:**  
Appropriations, *Chair*  
Commerce and Tourism  
Environmental Preservation and Conservation  
Rules

**JOINT COMMITTEE:**  
Joint Legislative Budget Commission,  
*Alternating Chair*

**SENATOR JACK LATVALA**  
16th District

March 2, 2017

Rick Scott, Governor  
PL 05 The Capitol  
400 South Monroe Street  
Tallahassee, FL 32399-0001

RE: Ridge Road Extension Project (Pasco County), Presidential Executive Order 13766

Dear Governor Scott:

My Senate district includes the southwestern portion of Pasco County, which is adjacent to the Gulf Coast. It is an area in serious need of infrastructure for emergency evacuation. The Ridge Road Extension (RRE) project is one such project that can address this concern.

The area regularly experiences flooding during both major and minor storms. In addition, Pasco has continued growth in residential and commercial development. That growth along the coast carries with it increased need for mobility and additional evacuation capacity from these vulnerable areas. Population growth elsewhere in the Tampa Bay area, including Pinellas County which is also in my district, places further demand on the existing evacuation routes in Pasco, as residents in Pinellas are forced to head north to seek refuge from storms.

During a flood event my constituents are limited to their roadway options to evacuate the area, putting their lives at risk. The most critical public safety project in Pasco County to increase emergency mobility is the RRE project. I have seen firsthand the vulnerability Pasco County faces in the aftermath of flooding events. This project has lingered far too long, over the past 19 years, in the federal permitting process without a permit decision.

I respectfully call on you to designate the Pasco County Ridge Road Extension (RRE) project as a priority project in accordance with the Executive Order (EO) 13766 Section 2, Expediting Environmental Reviews and Approvals for High Priority Infrastructure Projects. Thank you for your consideration and favorable support of this request.

Sincerely,

A handwritten signature in black ink that reads "Jack Latvala".

Jack Latvala  
State Senator  
District 16

**REPLY TO:**

26133 U.S. Highway 19 North, Suite 201, Clearwater, Florida 33763 (727) 793-2797 FAX: (727) 793-2799  
 412 Senate Office Building, 404 South Monroe Street, Tallahassee, Florida 32399-1100 (850) 487-5016

Senate's Website: [www.flsenate.gov](http://www.flsenate.gov)

**JOE NEGRON**  
President of the Senate

**ANITERE FLORES**  
President Pro Tempore



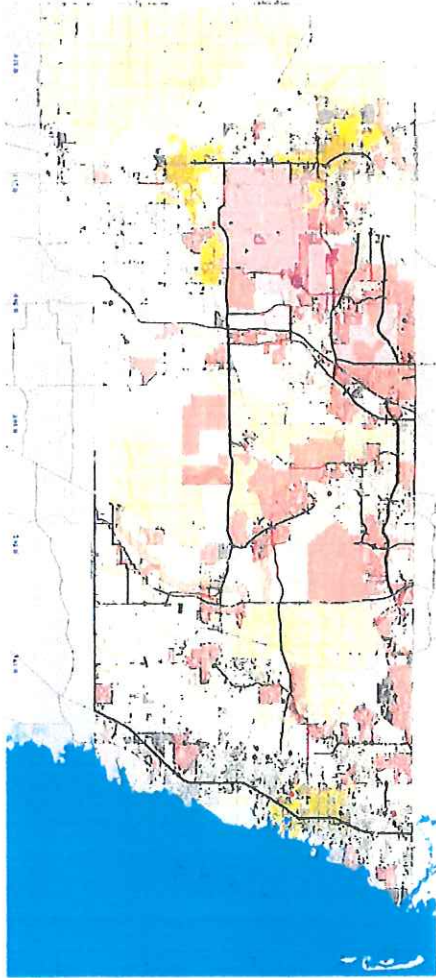
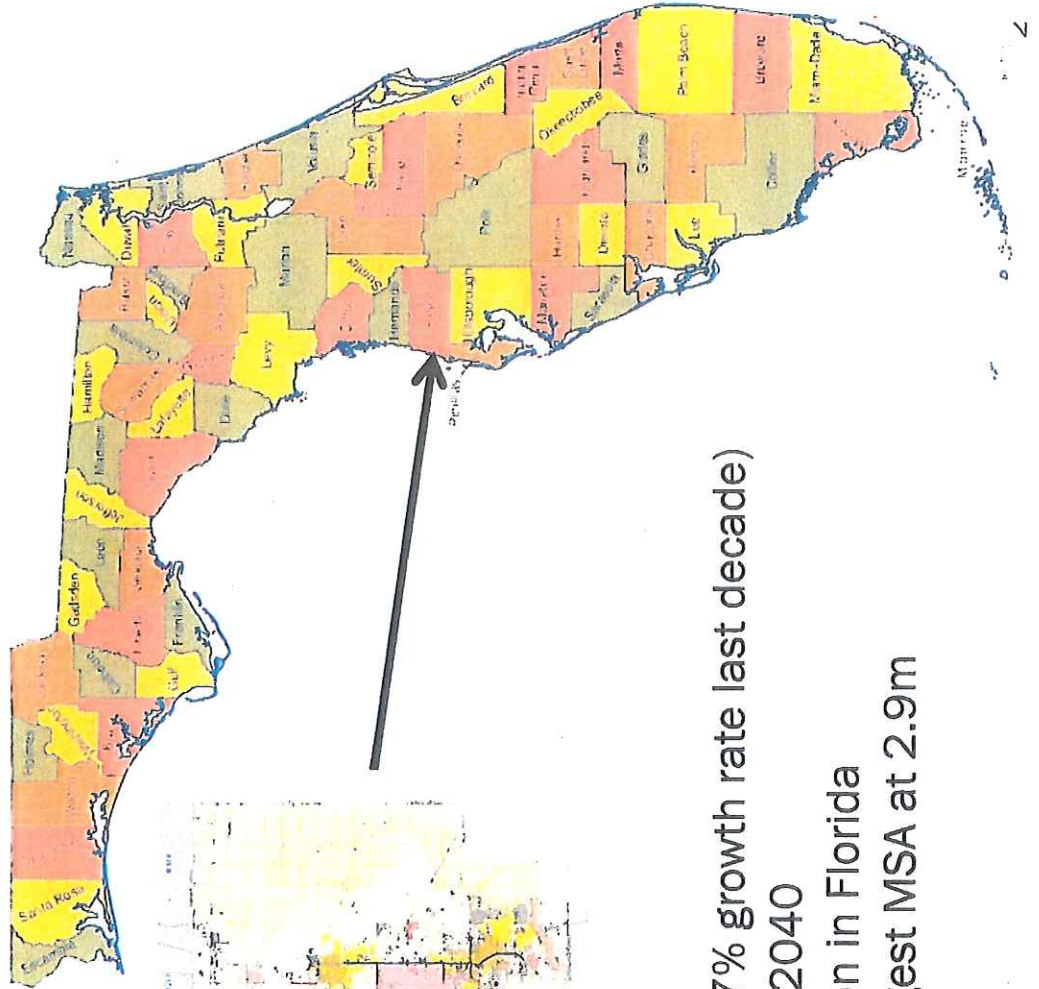
# Ridge Road Extension (RRE)

## Project Overview & Status

HQUSACE Meeting - February 27, 2017

Commissioners Mike Wells, Kathryn Starkey, and Jack Mariano  
Administrator Michele Baker, Government Affairs Officer Ralph Lair  
727-847-8115

# Pasco in Center of Florida Gulf Coast

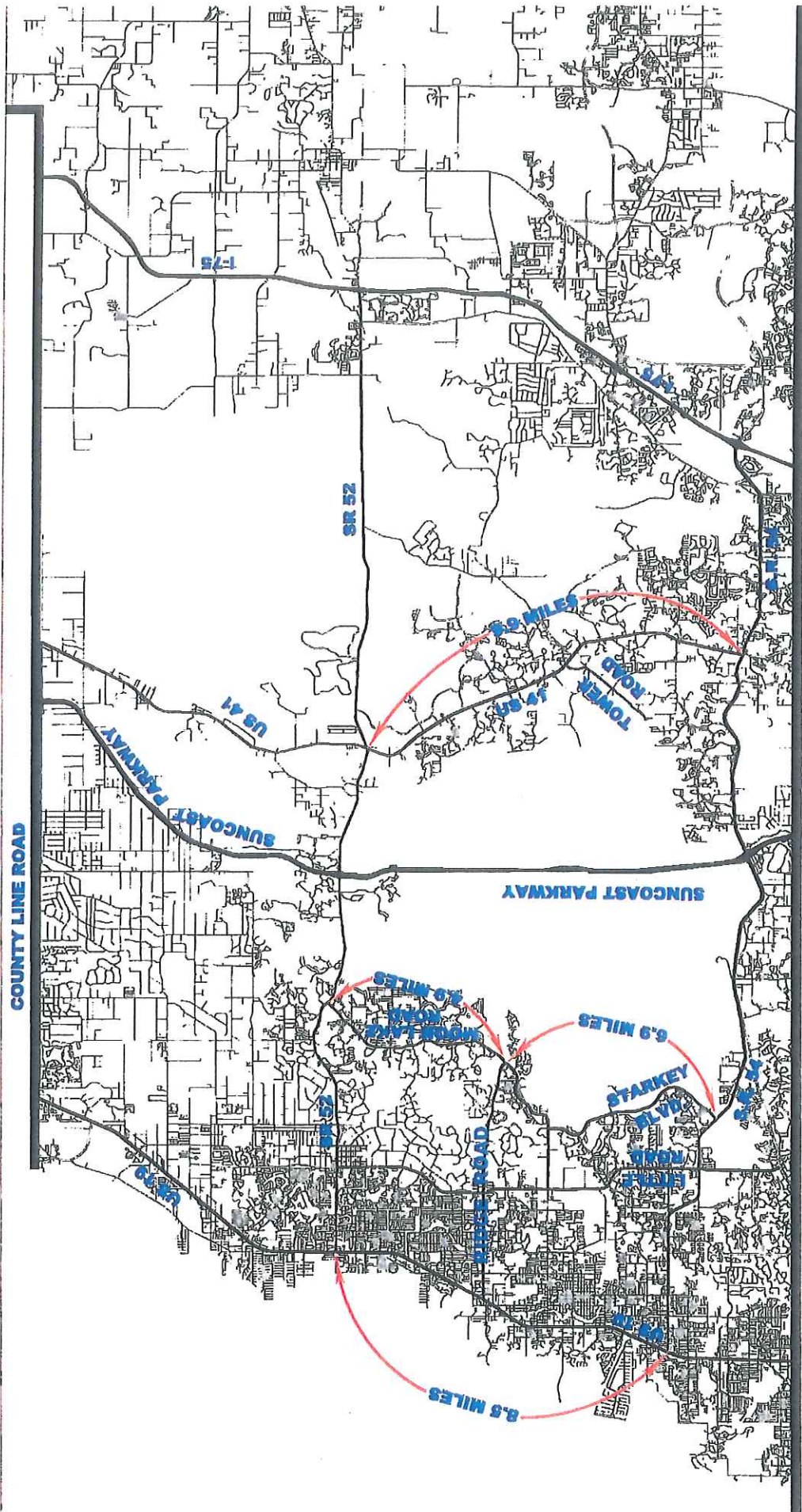


- 868 square miles
- 497,909 residents (37% growth rate last decade)
- 916,400 expected by 2040
- 12th largest population in Florida
- Tampa Bay is 2nd largest MSA at 2.9m

## Project Purpose

“To improve east-west roadway capacity and enhance overall mobility within the area bounded by SR-52 to the north, SR-54 to the south, US-41 to the east and Moon Lake Road, Decubellis Road, Starkey Boulevard to the west in accordance with the County’s current Comprehensive Plan and the Metropolitan Planning Organization’s Long Range Transportation Plan. The project will also provide additional roadway capacity and improved routing away from coastal hazard areas and improve hurricane evacuation clearance times in the event of a hurricane or other major weather-related occurrence in accordance with State of Florida requirements and the County’s current Comprehensive Plan.” <sup>3</sup>

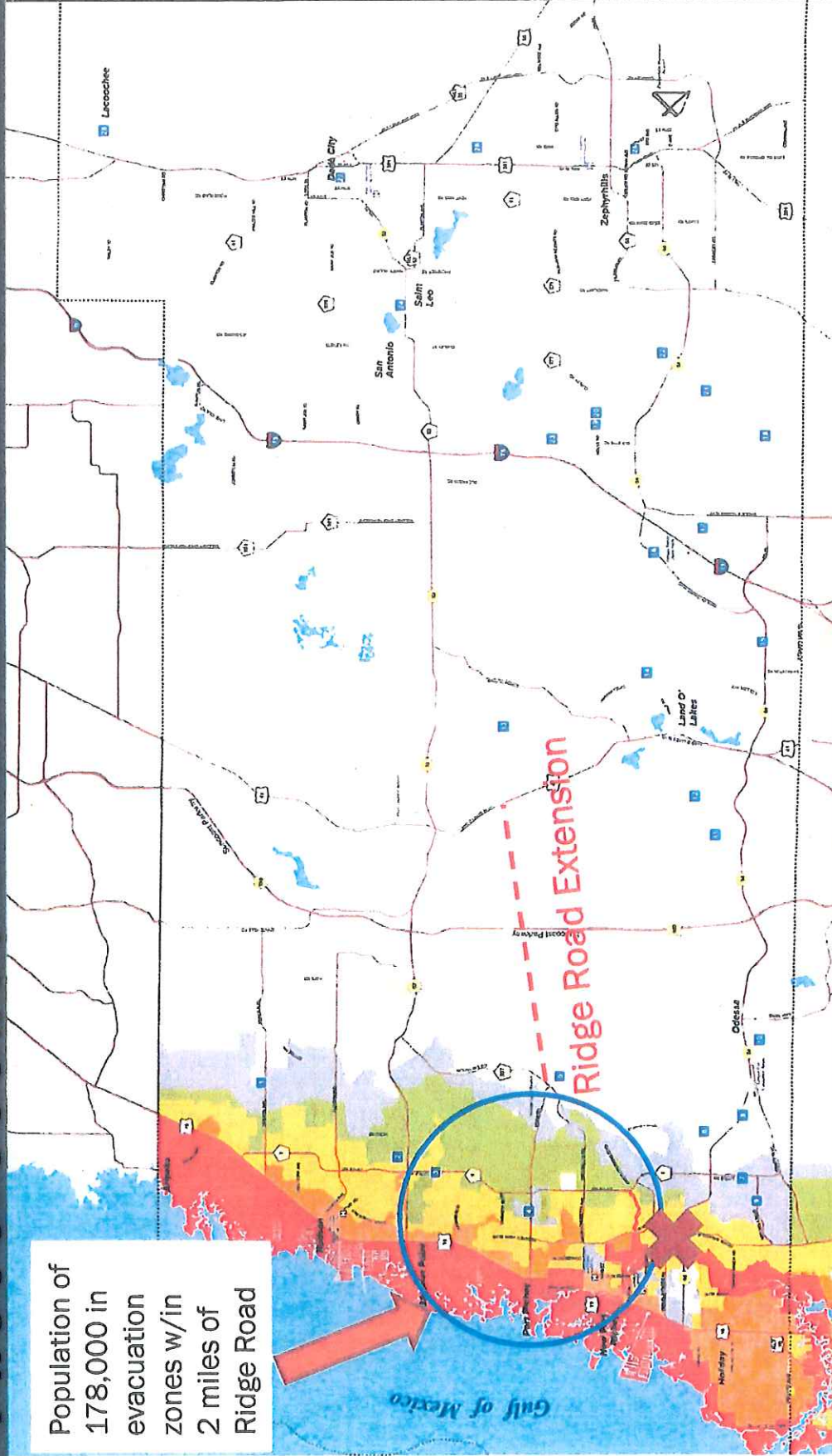
# Improved Mobility



# PASCO COUNTY

# EVACUATION ZONES & SHELTERS

Population of 178,000 in evacuation zones w/in 2 miles of Ridge Road



More than 218,000 people live in Pasco County evacuation areas and need to move inland. More than 1 million people in the region need to use Pasco's evacuation routes.

**SAFFIR-SIMPSON HURRICANE WIND SCALE**

CATEGORY	WIND SPEED (MPH)
Category 1	74 to 95
Category 2	98 to 110
Category 3	111 to 129
Category 4	133 to 156
Category 5	157 and over

**LEGEND**

**Evacuation Levels**

- Level A - Evacuate red areas and all manufactured home residents
- Level B - Evacuate red and orange areas and all manufactured home residents
- Level C - Evacuate red, orange, and yellow areas and all manufactured home residents
- Level D - Evacuate red, orange, yellow and green areas and all manufactured home residents
- Level E - Evacuate red, orange, yellow and green areas and all manufactured home residents

**Evacuation Shelters**

- Shelter 1
- Shelter 2
- Shelter 3
- Shelter 4
- Shelter 5
- Shelter 6
- Shelter 7
- Shelter 8
- Shelter 9
- Shelter 10
- Shelter 11
- Shelter 12
- Shelter 13
- Shelter 14
- Shelter 15
- Shelter 16
- Shelter 17
- Shelter 18
- Shelter 19
- Shelter 20
- Shelter 21
- Shelter 22
- Shelter 23
- Shelter 24
- Shelter 25
- Shelter 26
- Shelter 27
- Shelter 28
- Shelter 29
- Shelter 30
- Shelter 31
- Shelter 32
- Shelter 33
- Shelter 34
- Shelter 35
- Shelter 36
- Shelter 37
- Shelter 38
- Shelter 39
- Shelter 40
- Shelter 41
- Shelter 42
- Shelter 43
- Shelter 44
- Shelter 45
- Shelter 46
- Shelter 47
- Shelter 48
- Shelter 49
- Shelter 50
- Shelter 51
- Shelter 52
- Shelter 53
- Shelter 54
- Shelter 55
- Shelter 56
- Shelter 57
- Shelter 58
- Shelter 59
- Shelter 60
- Shelter 61
- Shelter 62
- Shelter 63
- Shelter 64
- Shelter 65
- Shelter 66
- Shelter 67
- Shelter 68
- Shelter 69
- Shelter 70
- Shelter 71
- Shelter 72
- Shelter 73
- Shelter 74
- Shelter 75
- Shelter 76
- Shelter 77
- Shelter 78
- Shelter 79
- Shelter 80
- Shelter 81
- Shelter 82
- Shelter 83
- Shelter 84
- Shelter 85
- Shelter 86
- Shelter 87
- Shelter 88
- Shelter 89
- Shelter 90
- Shelter 91
- Shelter 92
- Shelter 93
- Shelter 94
- Shelter 95
- Shelter 96
- Shelter 97
- Shelter 98
- Shelter 99
- Shelter 100

# Recurring Flooding on SR 54

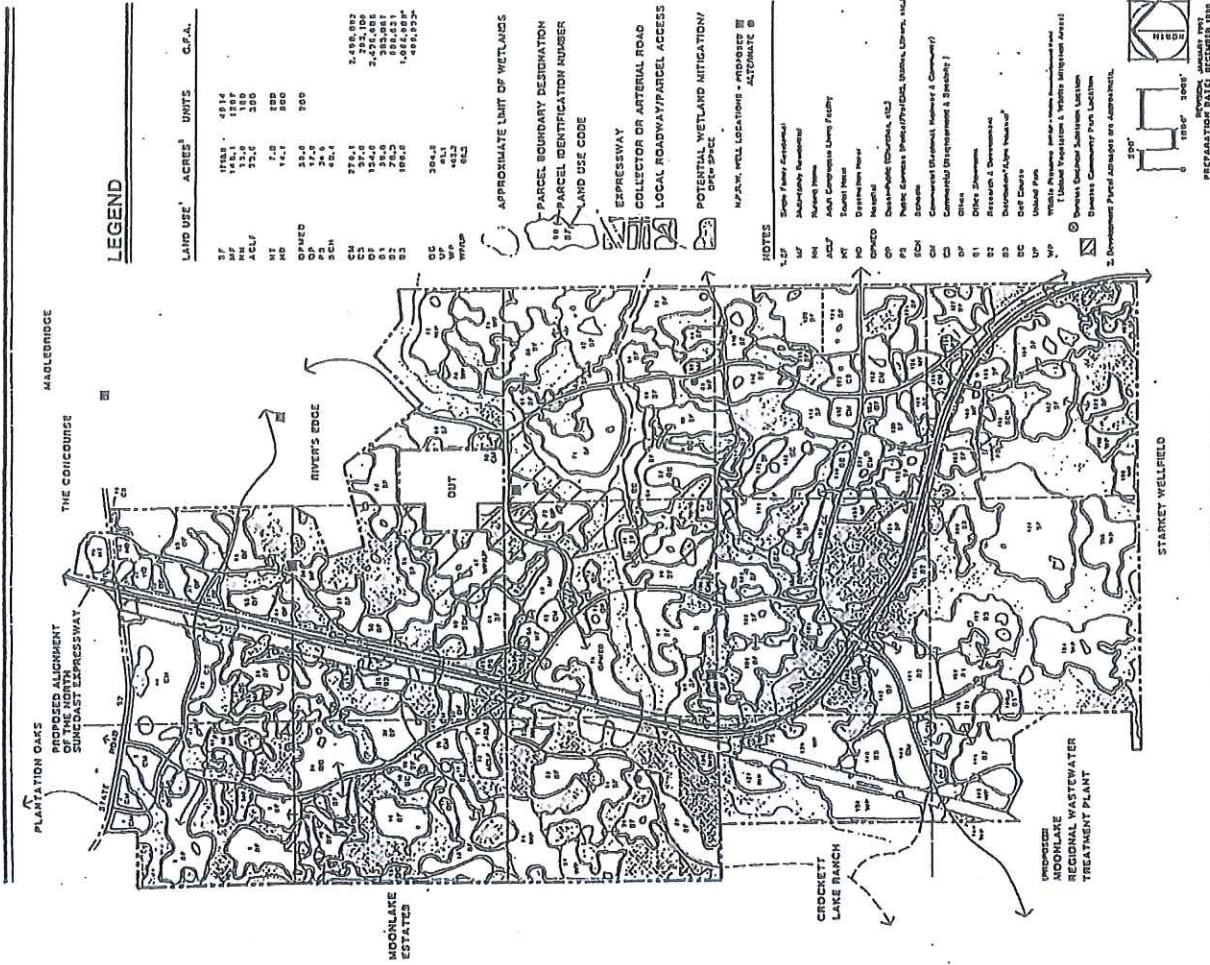


Intersection of SR 54 and Rowan Road/Seven Springs Blvd.



# Serenova DRI

- Approved by DCA, RPC & Pasco, Jan 1992
- Included RRE on Plans
- 6,481 residential units
- 279.1 acres of retail development
- 154.6 acres of office development
- 244.5 acres of industrial development
- Several public facilities



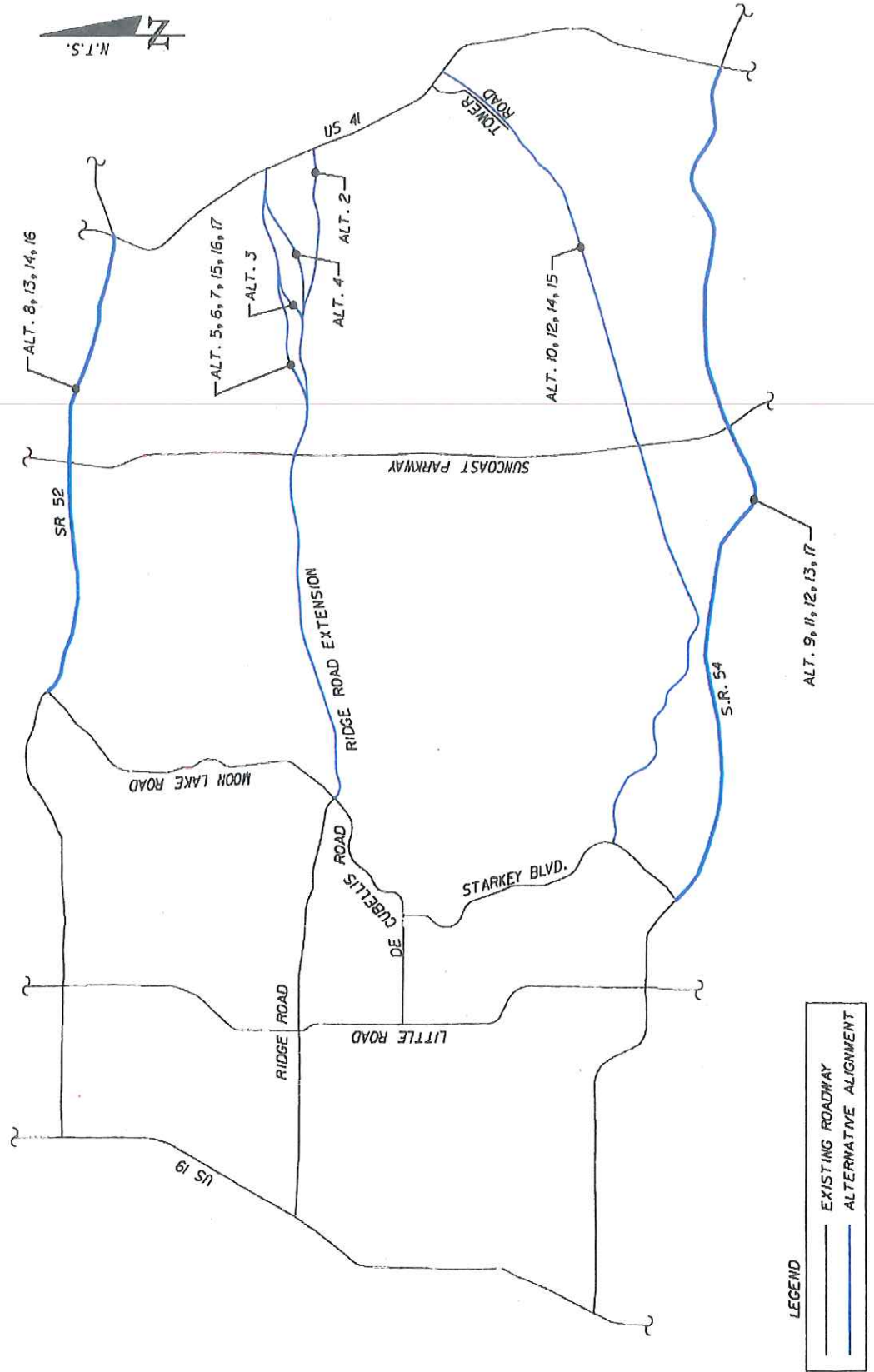
**SERENOVA**  
THE OTTO POTTBURG TRUST

A MASTER PLANNED COMMUNITY  
PASCO COUNTY, FLORIDA

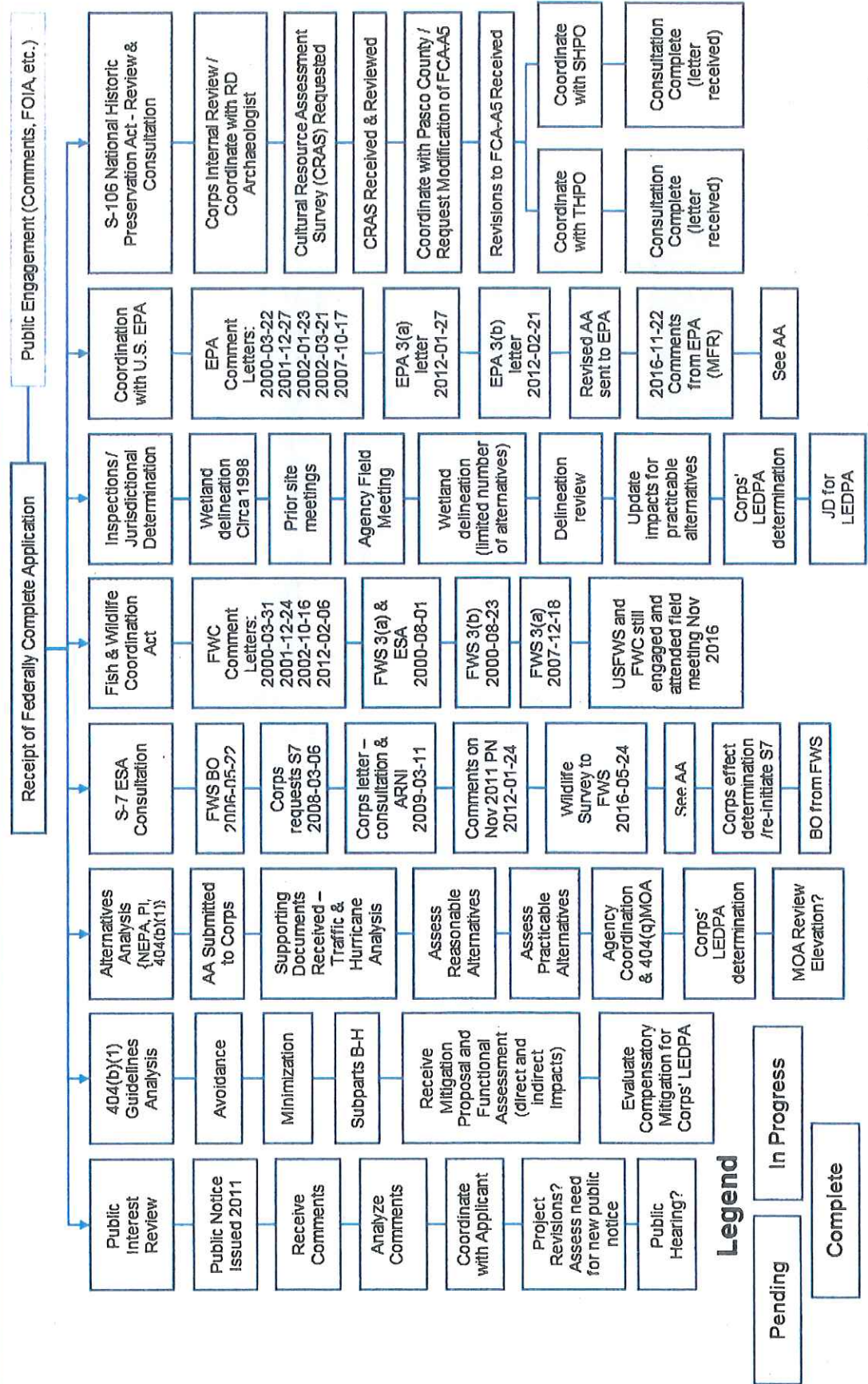
MASTER DEVELOPMENT PLAN  
RE 7  
MAP H

Prepared by: **KEA** Engineering & Planning Associates, Inc.  
10000 N. W. 27th Avenue, Suite 200, Boca Raton, Florida 33433  
Telephone: (407) 993-1111  
Fax: (407) 993-1112

# Alternatives Analysis



# USACE Application Review Status



## Legend

- Pending
- In Progress
- Complete

# Pasco County's Request

- We need another evacuation route before a hurricane causes significant loss of life.
- We need the alternative analysis review completed and the LEDPA identified.
- We need expedited agency reviews, and a timely permit decision.

Thank you!